



AlpInno CT

Alpine Innovation for Combined Transport

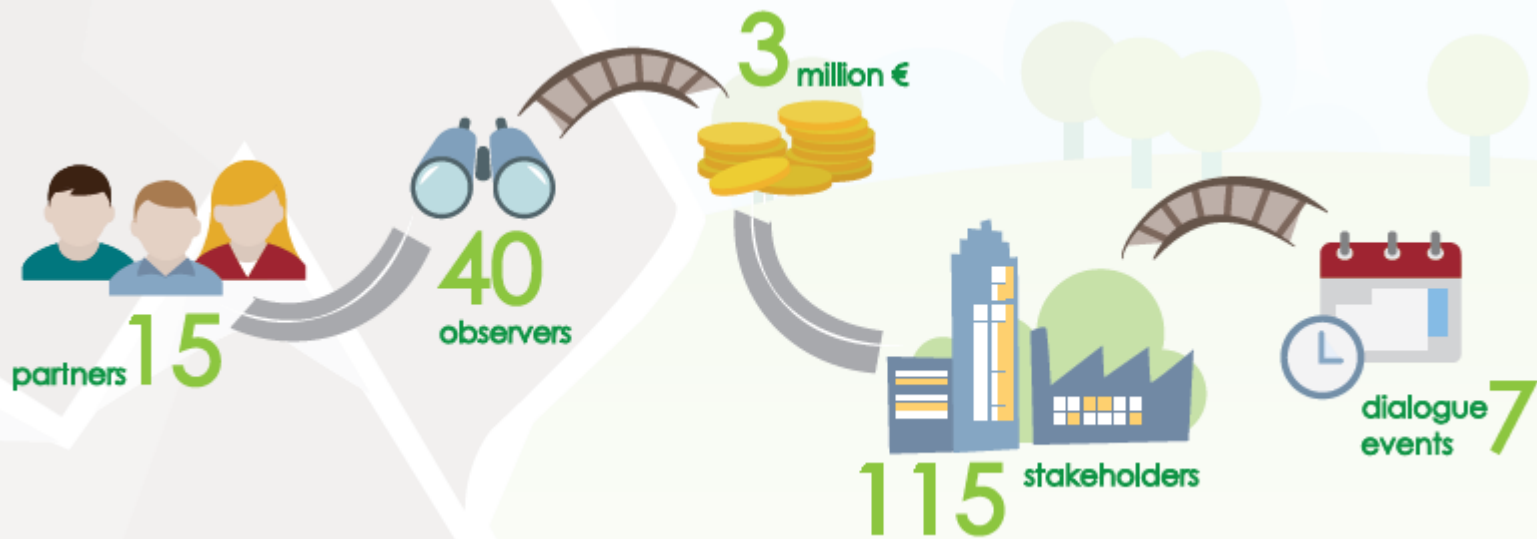
Harry Seybert

Bavarian Ministry for Housing, Building and Transport



WHAT

The Alps are a **sensitive ecosystem** to be protected from pollutant emissions & climate change. Continued growth in **freight traffic volume** leads to environmental problems. These trends reinforce the need to **review existing transport** & **develop innovative models** to protect the Alpine Space (AS) as set out eg. in the [EU White Paper 2011](#) and [EUSALP-EU](#) strategy. But often the efficiency of Combined Transport (CT) is low. Therefore, the project **Alpine Innovation for Combined Transport (AlpinnoCT)** tackles the main challenge to **raise CT efficiency & productivity** through the application of production industry knowhow (which is ideal to improve processes) in CT.





WHY

- To improve the **processes and cooperation** in CT networks
- To integrate **innovative approaches** fostering modal shift from road to rail in freight transport
- To enhance the knowledge and **reinforce the participation** possibilities for each stakeholder in freight transport



WHO

- **Logistics service providers** will benefit from improved processes & an easier CT access.
- **Wagon & semitrailer producers** obtain insights into CT innovations.
- **NGOs & institutions** enter into dialogue with other stakeholders to state mutual interests, raise awareness and approach solutions.
- **Politicians & decision makers** will be better prepared to set the future CT framework with regards to environment.



WHEN

November 2016 - October 2019



WHERE

- Austria
- Germany
- Italy
- Slovenia
- Switzerland



OUTPUTS

- Description of the **state of the art** of the European transport system with focus on CT
- Recommendations for an ideal **CT-model concept** by transfer of production industry knowhow
- **Guideline** for the integration of innovative intermodal approaches into daily CT business
- Alpine wide **dialogue platform** with dialogue events as information exchange brings together all stakeholders & target groups
- **Toolbox of Action** (Handbook)

PROJECT PARTNERS

LEAD PARTNER

Bavarian State Ministry of
Housing, Building and Transport



LAND KÄRNTEN

Abt. 7 – Wirtschaft, Tourismus,
Infrastruktur und Mobilität

Regional Government of Carinthia

AUSTRIA



Consorzio ZAI Interporto

Quadrante Europa

ITALY

eurac
research

European Academy of Bolzano -

Eurac Research

ITALY



Univerza v Mariboru

Faculty of Civil Engineering,
Transportation Engineering
and Architecture

University of Maribor - Faculty of

Civil Engineering, Transportation

Engineering and Architecture

SLOVENIA



Prometni inštitut Ljubljana d.o.o.

Institute of Traffic and Transport Ljubljana U.L.

Institute of Traffic and Transport

Ljubljana I.I.C

SLOVENIA



iniziativa

da las alps

Association for the protection of

the Alps from transit traffic

SWITZERLAND



Unione camere
Veneto

Regional Union of the Chambers
of Commerce of Veneto -
Eurospello

ITALY



Austrian Federal Ministry for
Transport, Innovation and
Technology

AUSTRIA



CIPRA
LIVING IN
THE ALPS

Cipra International Lab GMBH

AUSTRIA



Port Network Authority
of the Eastern Adriatic Sea
Part of Trieste

Trieste Port Authority

ITALY



Regione Autonoma
Friuli Venezia Giulia

Autonomous Region of Friuli
Venezia Giulia

ITALY



bayernhafen
Gruppe

Bayernhafen GMBH & Co.

GERMANY



EBERL
WORLDWIDE LOGISTICS

Eberl International Forwarding
Agency GMBH & Co. KG

GERMANY



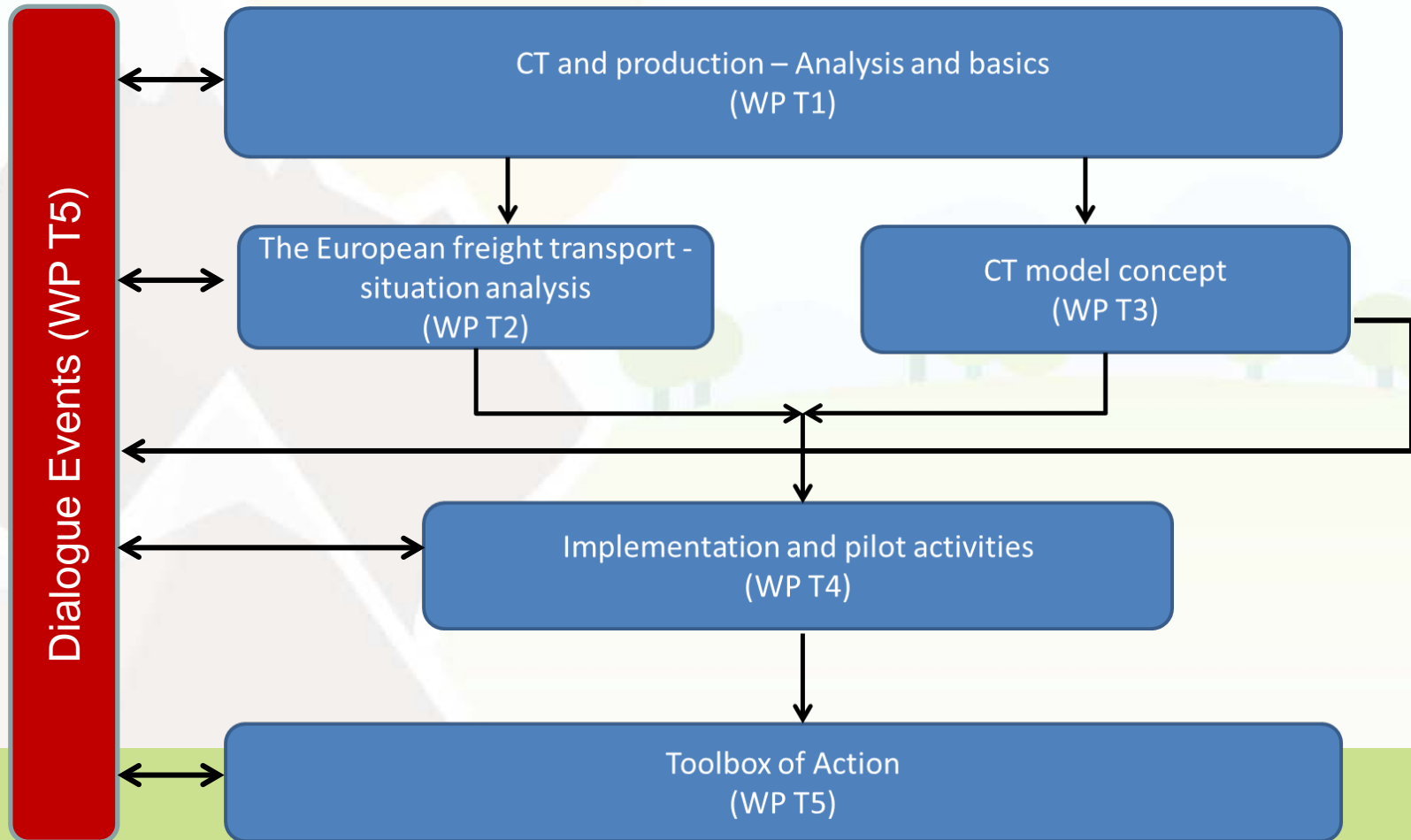
TXLOGISTIK

TX Logistik AG

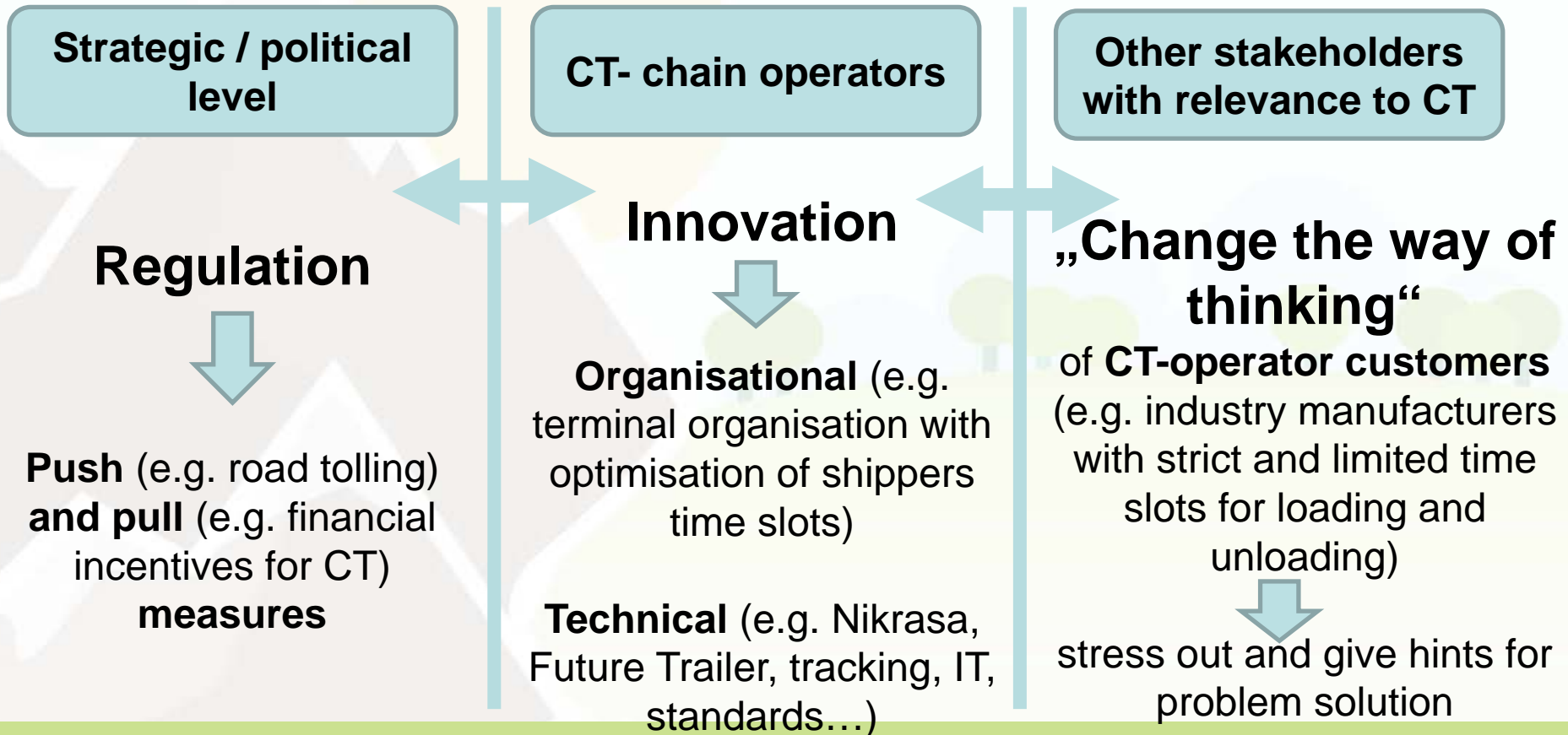
GERMANY



Workplan



AlpInnoCT – framework





AlpInno CT

Alpine Innovation for Combined Transport

